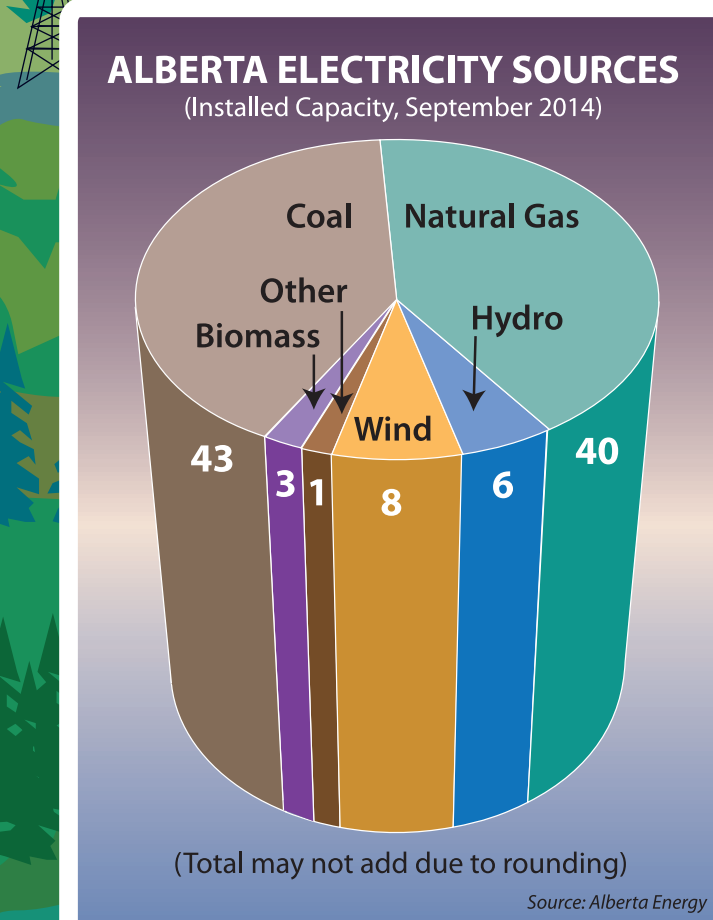
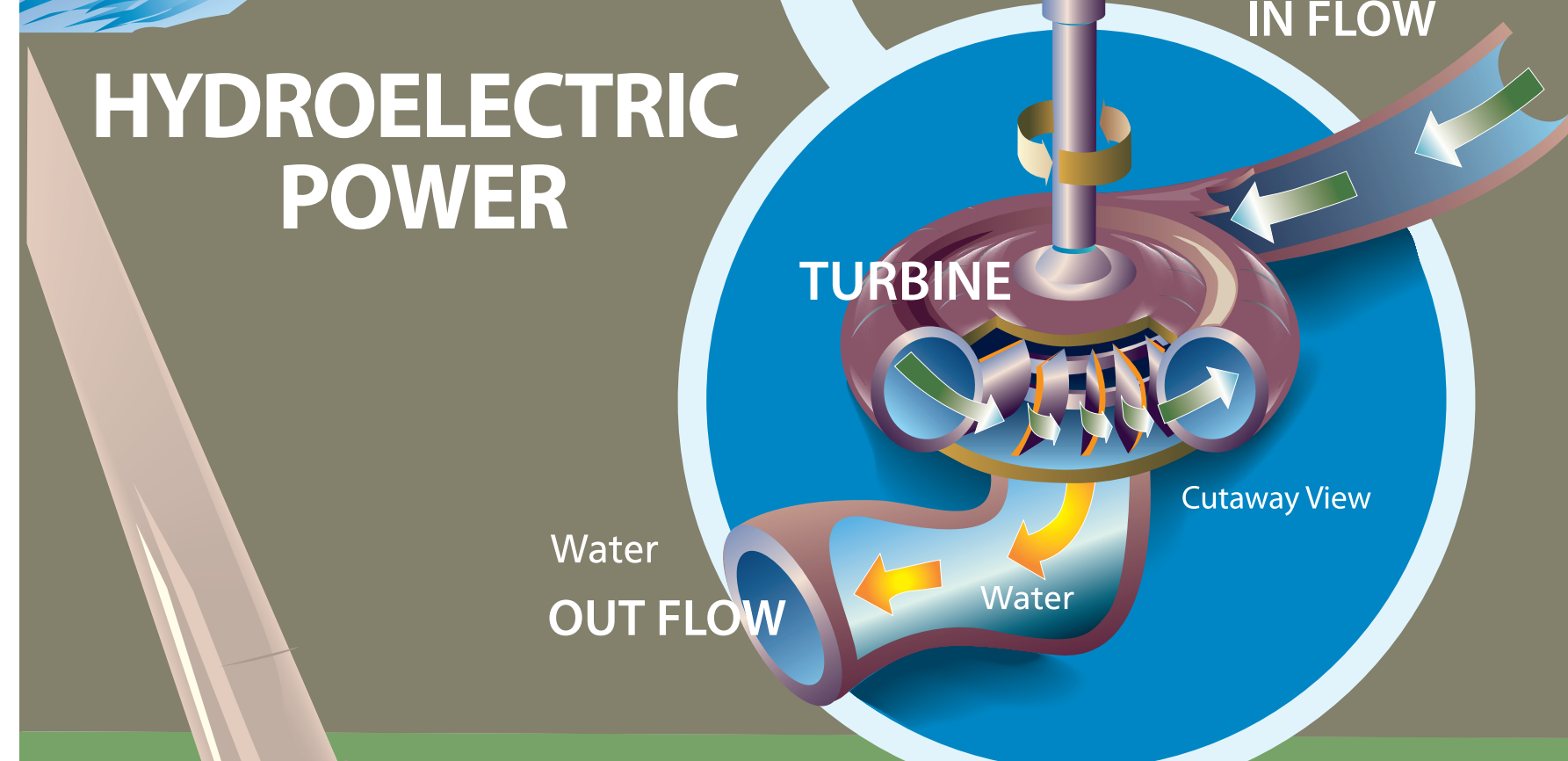
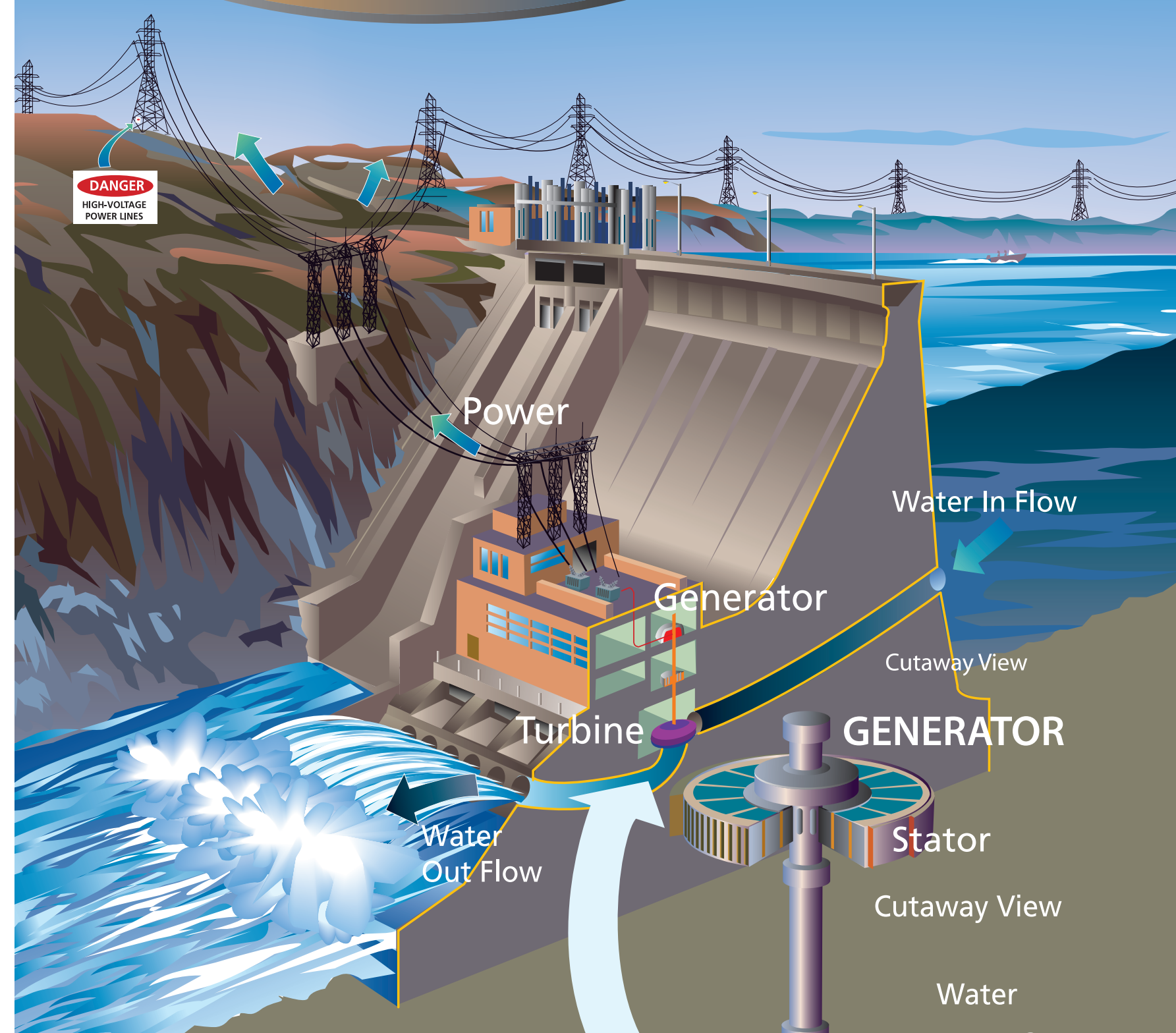
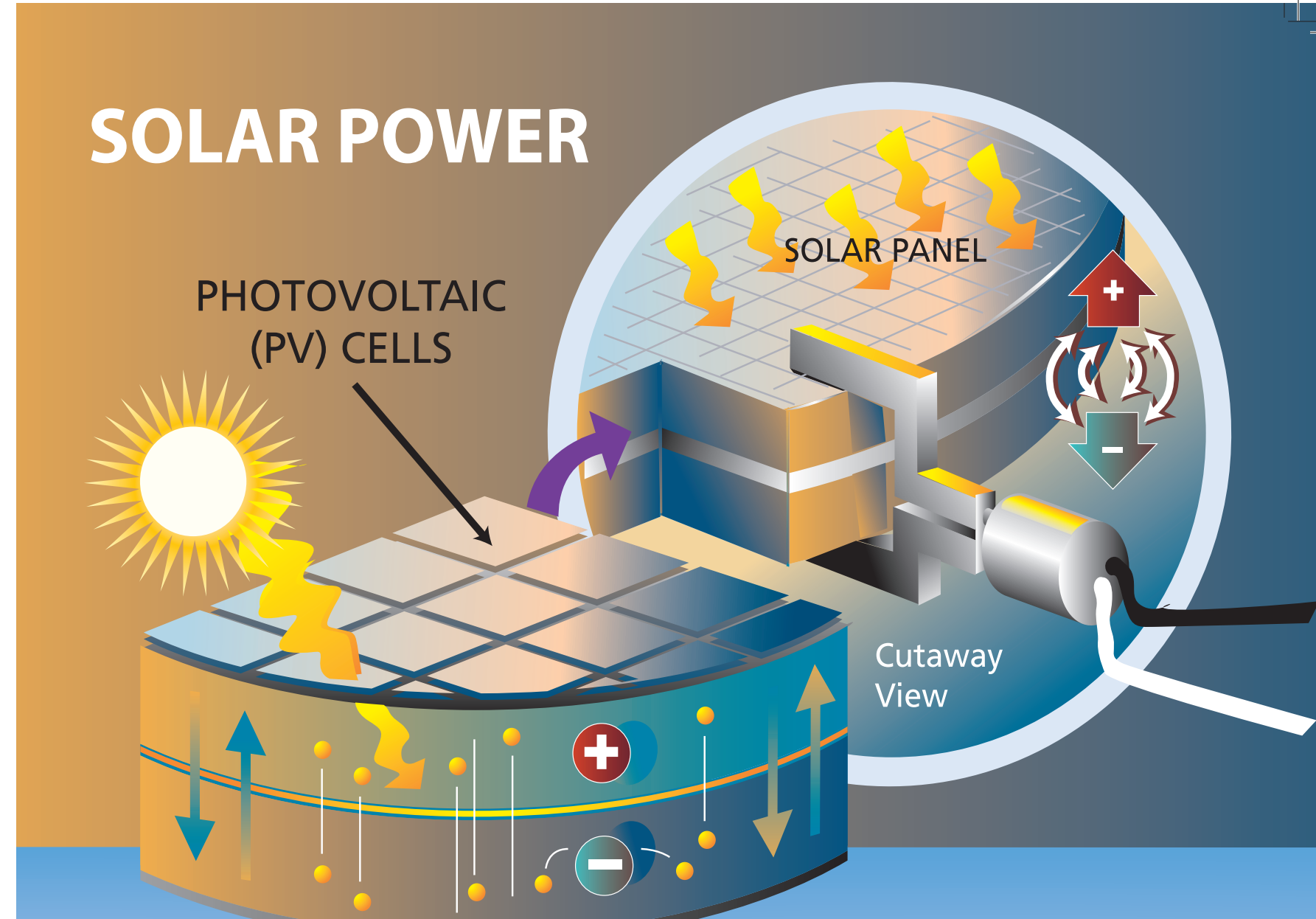


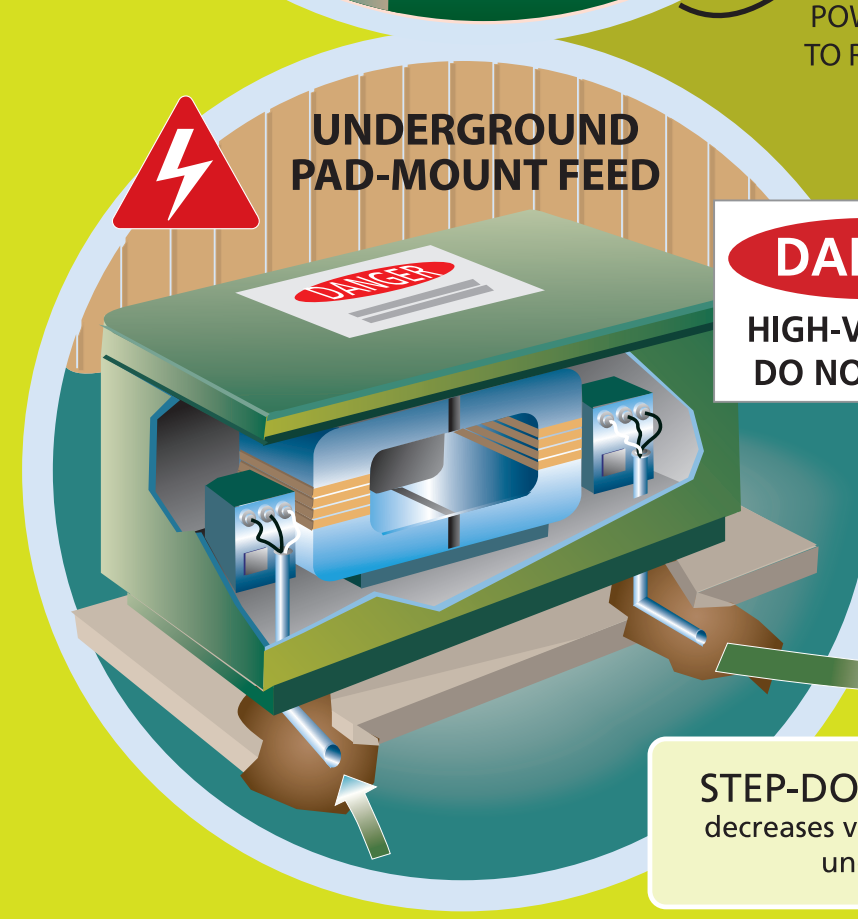
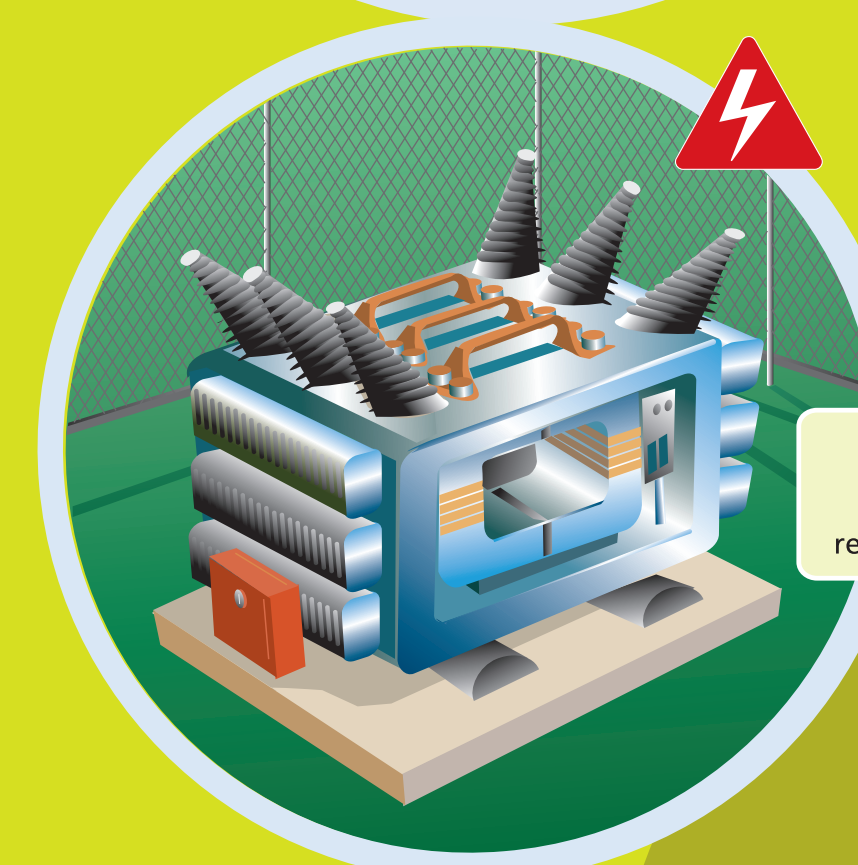
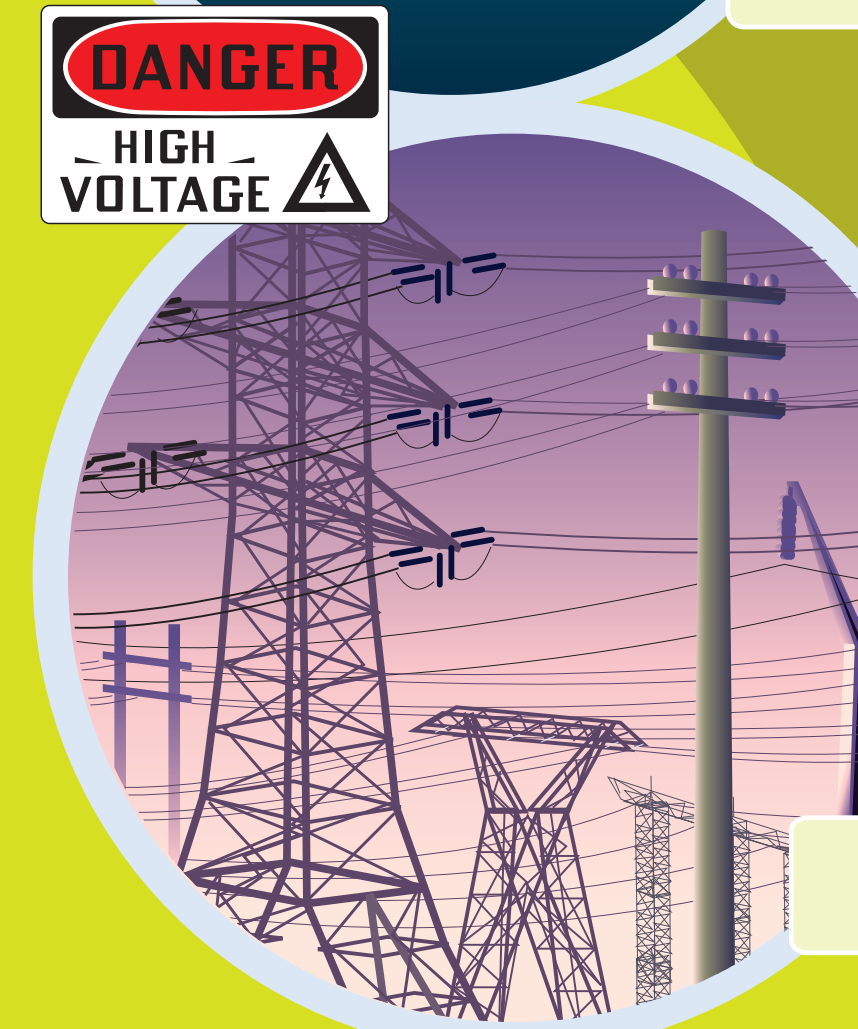
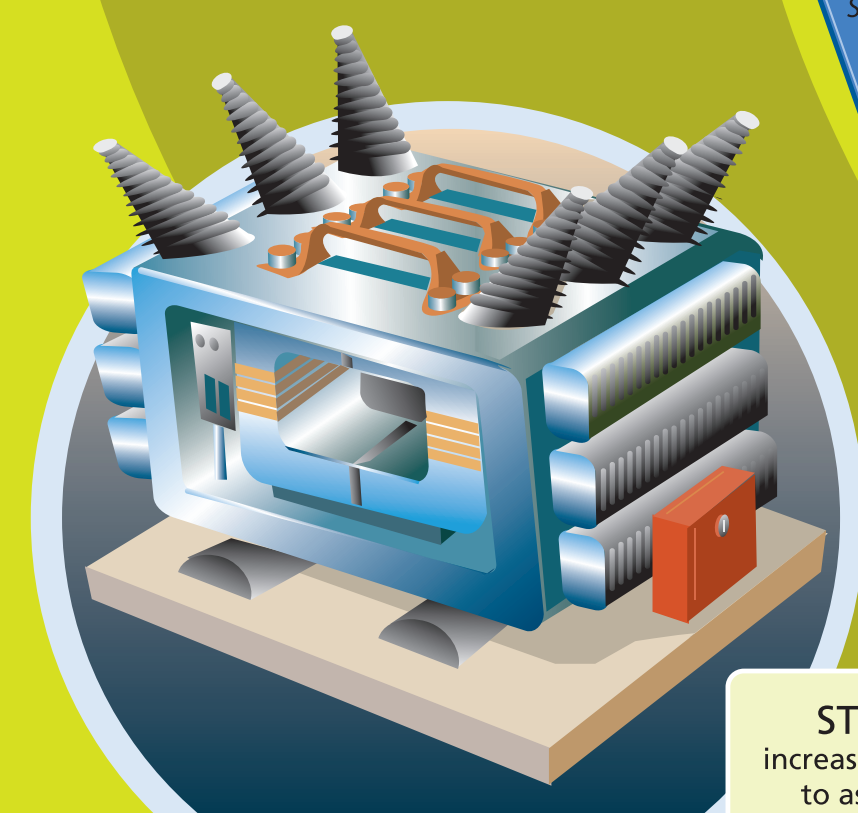
ELECTRICITY



Supported by:
ENMAX
Government of Alberta

Inside education

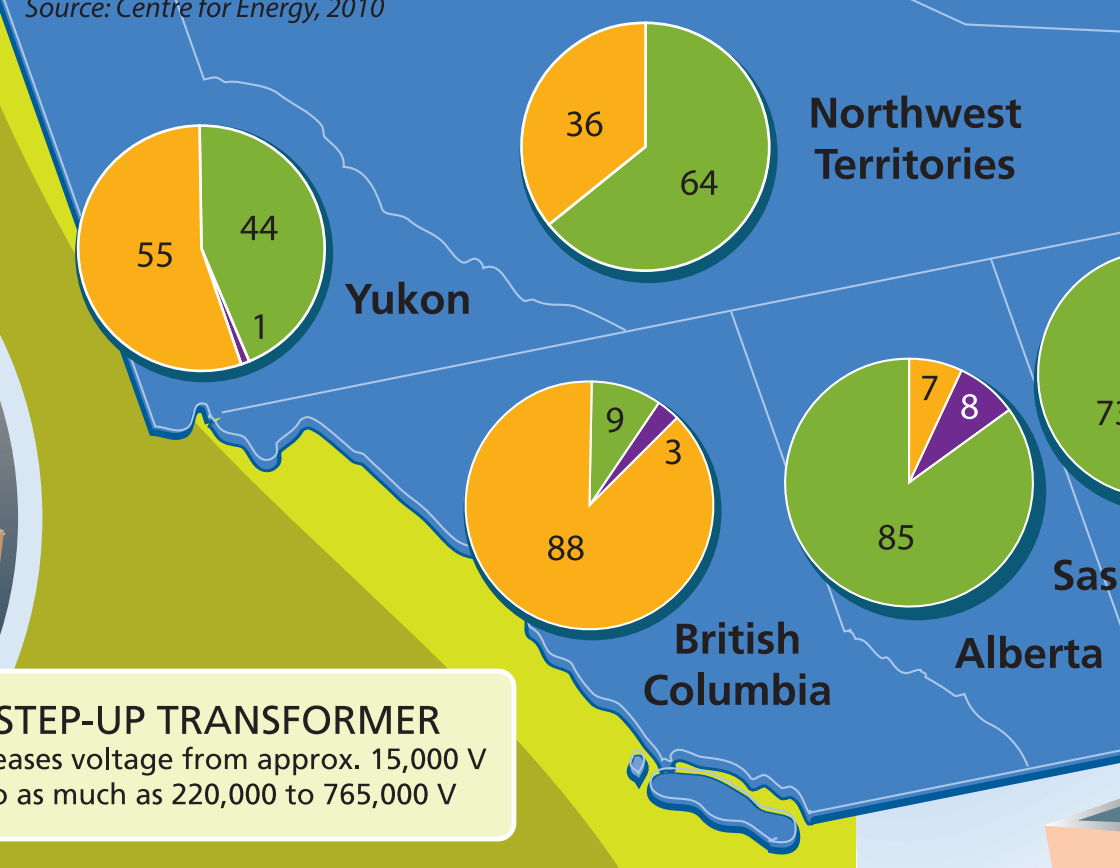
ELECTRICITY SOURCE



CROSS-COUNTRY ELECTRICITY SNAPSHOT (2010)

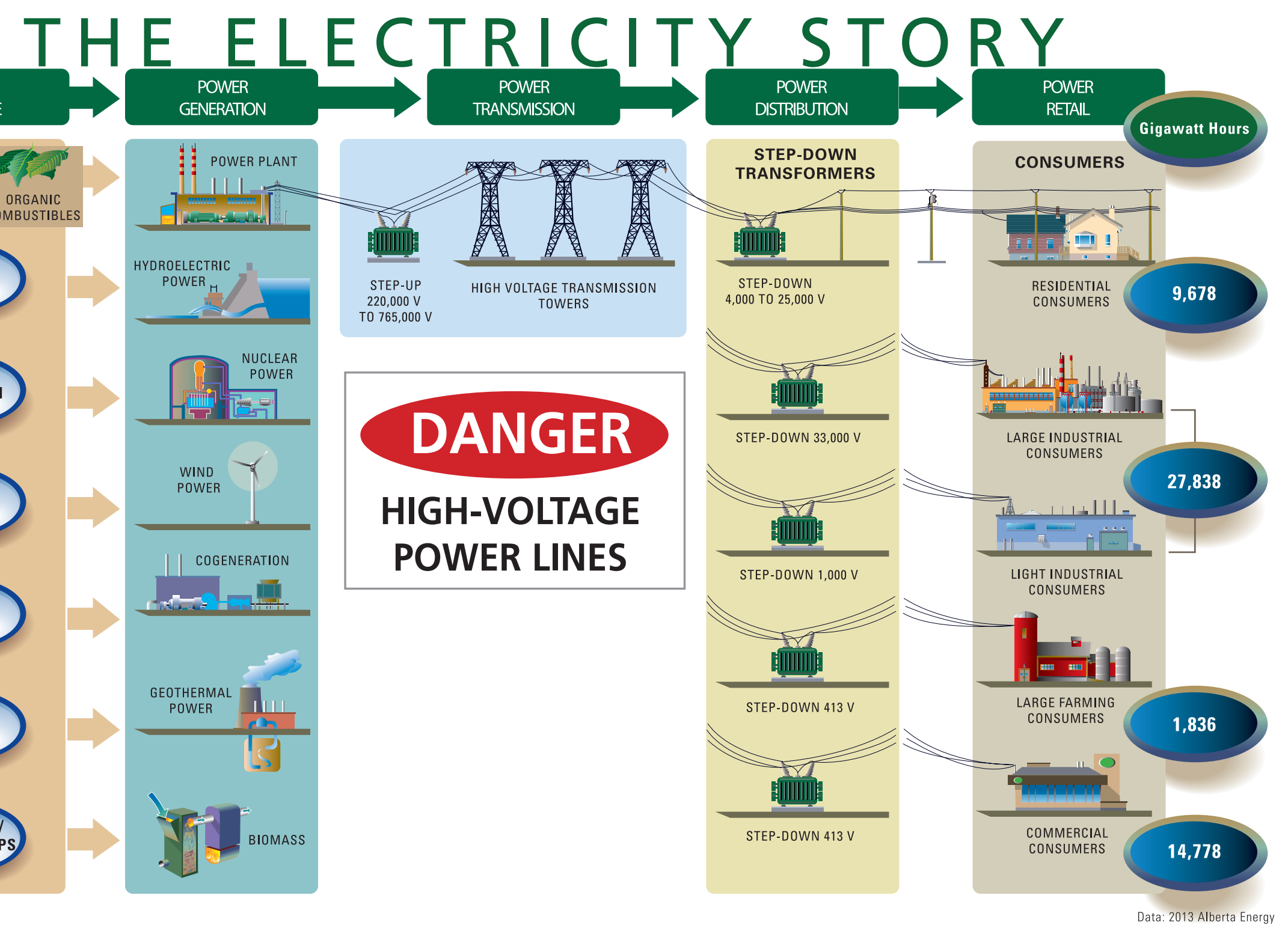
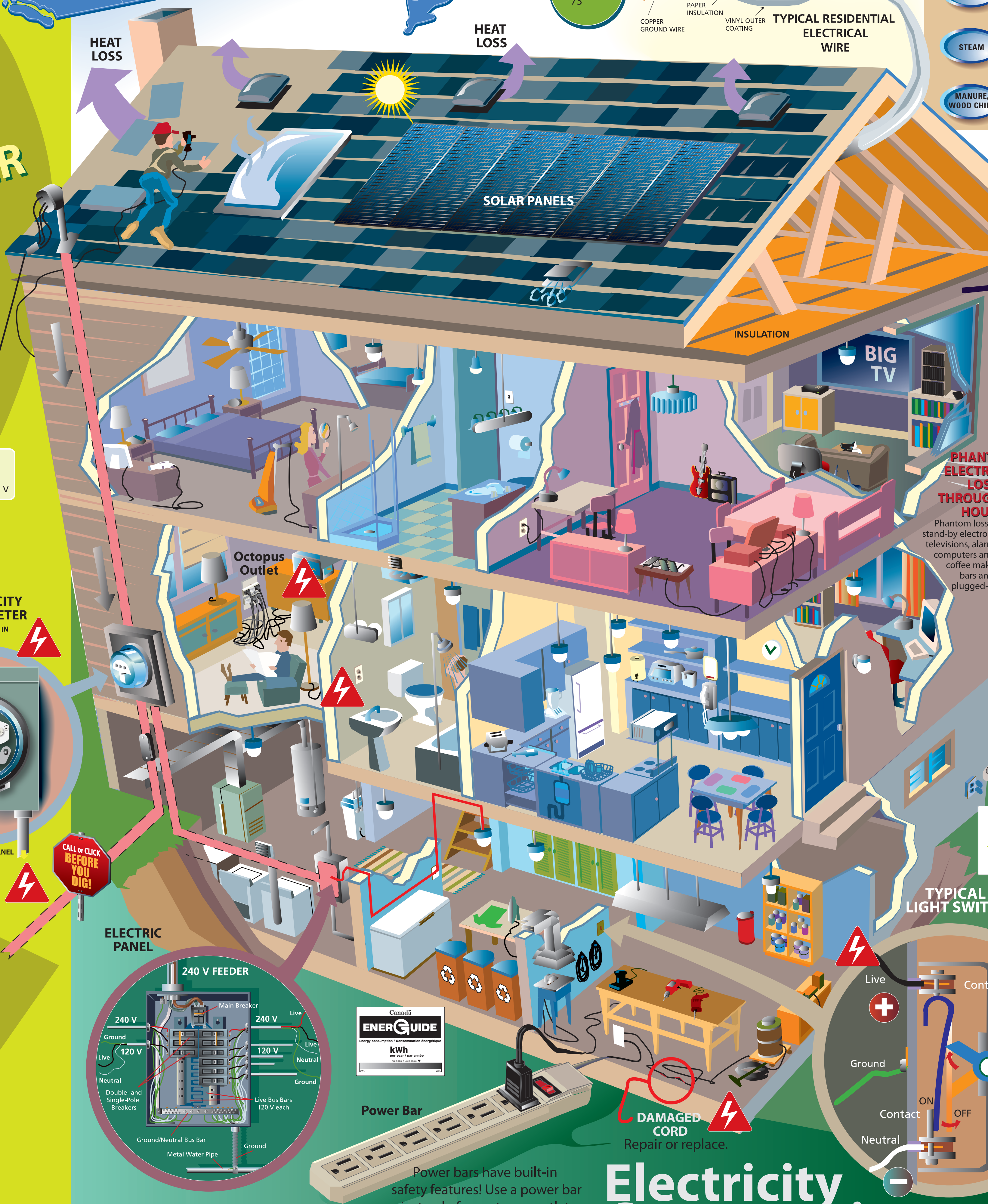
Approximate (Thermal: fired by coal, oil, or natural gas)

LEGEND: Hydro (Green), Thermal (Yellow), Nuclear (Red), Other (includes wind and/or biomass) (Purple)



ELECTRICITY

The many uses of electricity in the home.



THE PATH OF POWER

TRANSMISSION LINES various loads up to 765,000 V

OVERHEAD FEED

SUBSTATION STEP-DOWN TRANSFORMER reduces voltage to approx. 4,000 V to 25,000 V

STEP-DOWN TRANSFORMER decreases voltage to 240 V overhead residential service

ELECTRICITY USAGE METER POWER FEED IN

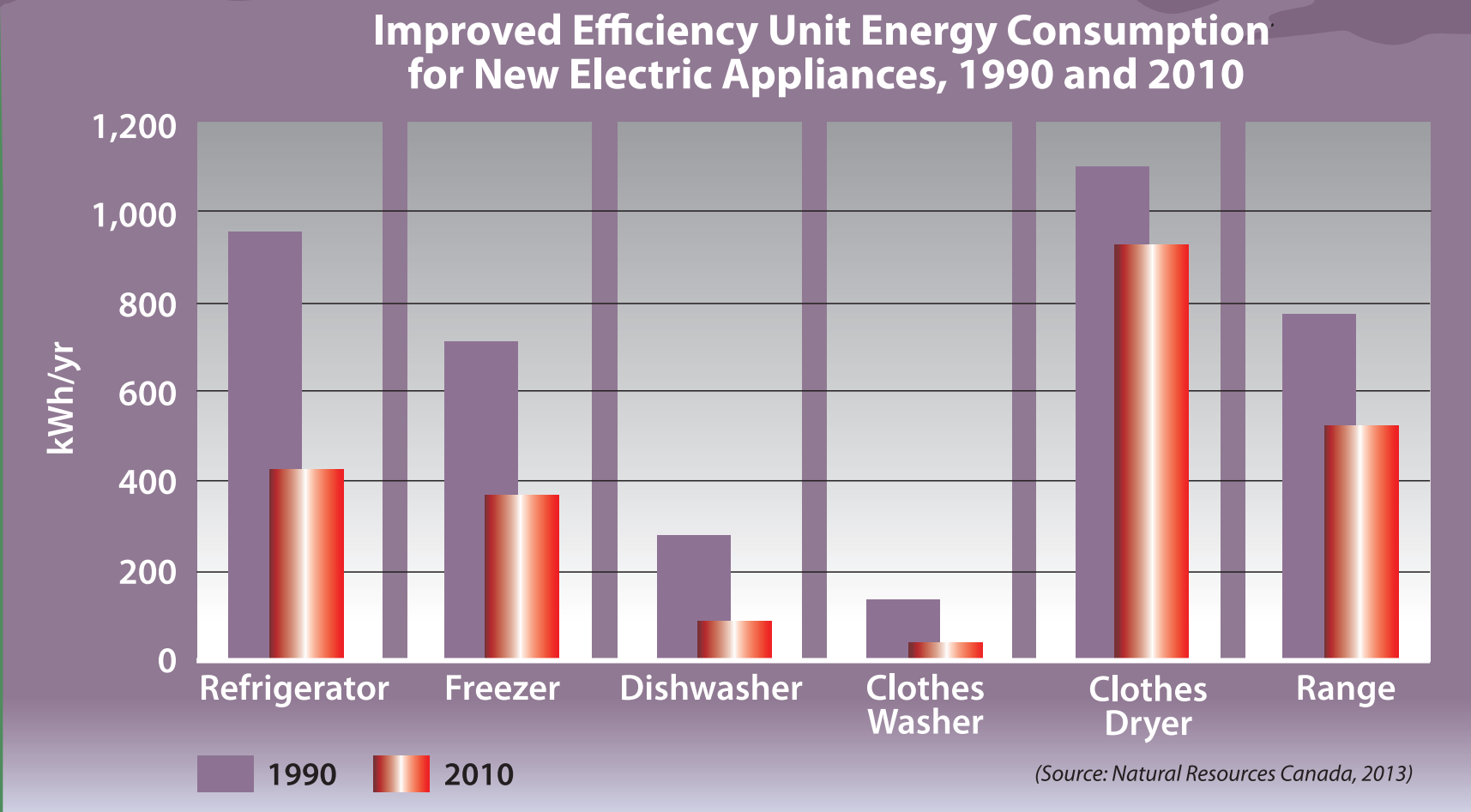
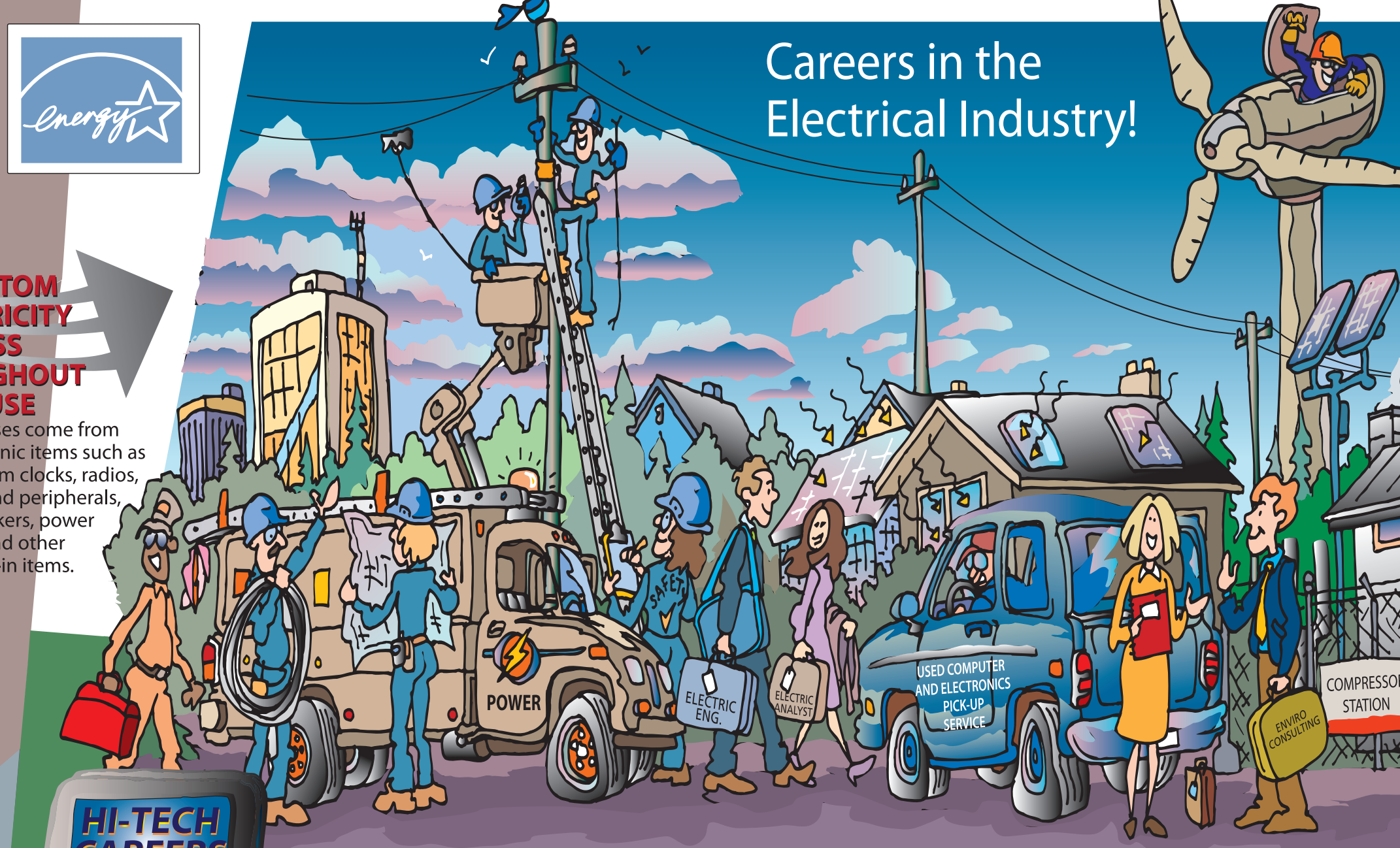
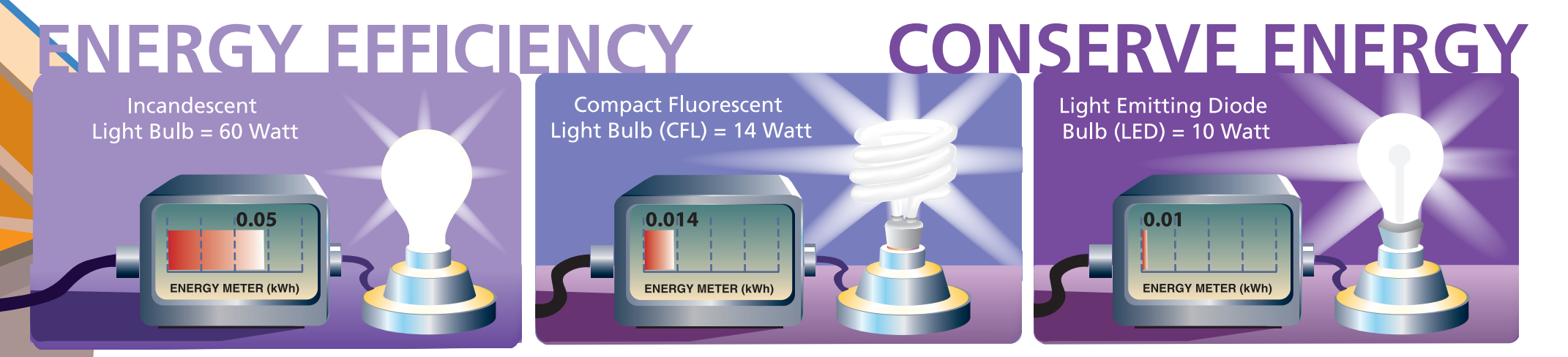
POWER FEED TO PANEL

DANGER HIGH-VOLTAGE DO NOT OPEN

OPTIONAL POWER FEED TO RESIDENCE

STEP-DOWN TRANSFORMER decreases voltage to 240 V residential underground service

Electricity Transmission



Supported by:

and the:

Contact information: Inside Education, (780) 421-1497, www.insideeducation.ca © COPYRIGHT, Inside Education, 2014

Electricity Consumption

