

Helping You Power Your Project

Our team is here to help you every step of the way.

As the owner and operator of the electric distribution system, ENMAX Power is your contact for helping you with projects within our service area.

Areas we serve

In general, we support power projects within the greater Calgary area. Please visit our website to see if your project is [within our service area](#).

For answers to your questions:

403-514-3716

getconnected@enmax.com

1. What to expect

Details about your project.

Depending on the scope of work, at a minimum our team will typically require the following information to get started:

- Project scope
- Site plan
- Electrical single line diagram
- Grading/elevation plans
- Electrical mast and/or meter locations

Kick off your project.

The first step is to enter your project details on our [Service Form](#). Once your form is received by ENMAX Power you can expect a site servicing representative to be in touch with you within three business days to walk you through the next steps.

Cost estimates.

You can request a cost estimate for your project to help determine next steps. ENMAX Power uses past knowledge from similar projects, as well as virtual imagery of your site to create this very rough estimate. Due to the high-level nature of this review, a cost estimate will provide a rough cost based on several assumptions and is for reference purposes only.

2. What your initial project payment includes

Customer payments, including your initial project payment, are associated with the resources required to establish a quote and scope of work including:

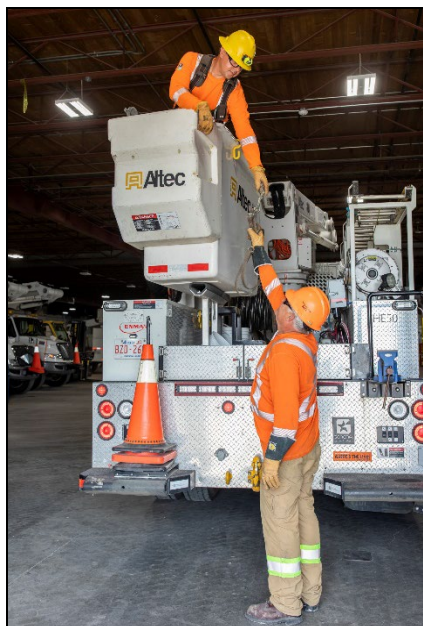
- A project manager or project contact.
- Engineering and construction resources to scope and design your project in accordance with ENMAX Power requirements and applicable codes/standards/specifications/statutes.

3. Categorizing your project.

Based on the information provided, residential projects fall one of two execution models:



Project Type - Minor Service Order	
Description & Requirements	No engineering design or permitting required
Project Examples	Trenching, installing conduit, connections to existing ENMAX equipment (i.e. transformers)
Duration	3 – 6 weeks (To be confirmed based on scope)
Quotation Process	A quotation will be provided for customer acceptance and will be final invoiced on actual project costs.
Deposit	\$1,000 + GST



Project Type - Expedited Customer Projects	
Description & Requirements	Generally smaller in scale with no extensive permitting or stakeholder engagement
Project Examples	<ol style="list-style-type: none"> 100 Amp to 200+ Amp electrical service upgrades Overhead power pole/guy wire/anchor relocations
Duration	3–6 months (To be confirmed based on scope)
Quotation Process	A firm cost quotation and engineered design drawings will be provided for customer acceptance
Deposit	\$1,000 to \$10,000 + GST