



ENMAX Power Corporation
141 – 50 Avenue SE
Calgary, AB T2G 4S7
Tel (403) 514-3000
enmax.com

MAY 13, 2021

Dear Resident/Owner/Occupant:

RE: PROJECT UPDATE - ENMAX No. 37 Substation Capacity Upgrade Project
Location: 5099 68 Street SE

In November 2020, ENMAX Power Corporation (ENMAX Power) mailed out a project information package to stakeholders outlining the project scope for the proposed ENMAX No. 37 Substation Capacity Upgrade Project (the Project).

ENMAX Power indicated its intent to file an application for approval with the Alberta Utilities Commission (AUC) in Q1 2021. Due to current economic conditions, ENMAX Power is reassessing the Project. ENMAX Power plans to mail out an updated project information package to project-specific stakeholders once an intended filing date has been determined.

Please find enclosed a map of the Project location.

For more information regarding the need for these substation upgrades, please contact the Alberta Electric System Operator (AESO) at stakeholder.relations@aesoc.ca or 1-888-866-2959.

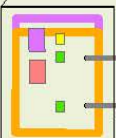
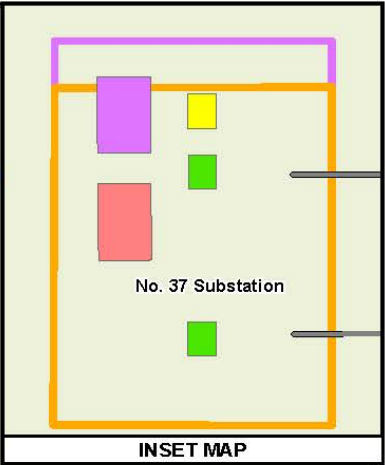
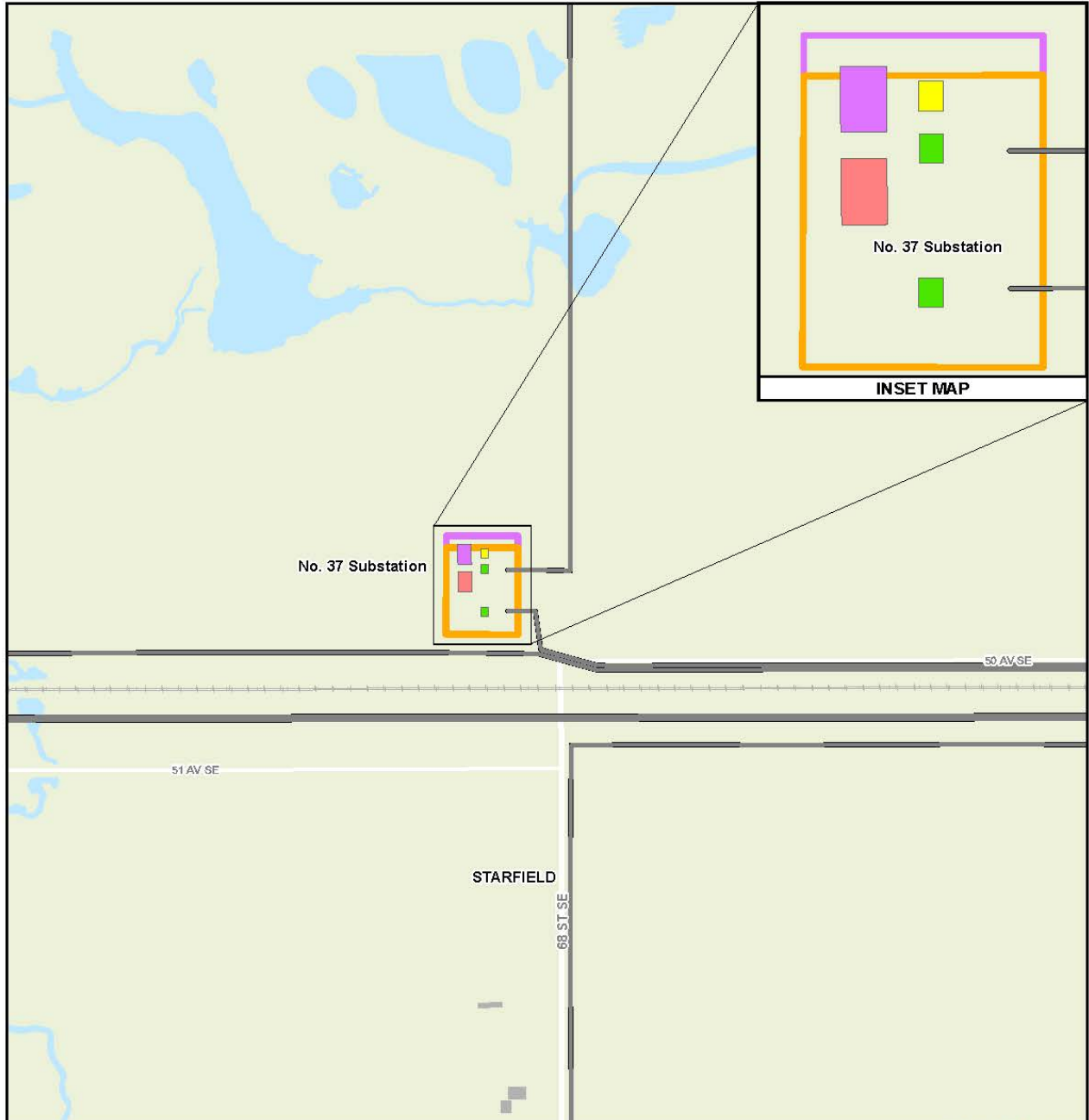
If you have any further questions or concerns relating to the Project, please contact our ENMAX Power Stakeholder Relations team at stakeholderrelations@enmax.com or (403) 514-1471. To stay informed or learn more about the Project, please visit www.enmax.com and search *Current Projects*.

Sincerely,

Stakeholder Relations
ENMAX Power

PROJECT MAP

Please note map illustrates an approximate location only and is not to scale.



**ENMAX Power
No. 37
Substation
Capacity Upgrade
Project
Newsletter Map**

Legend

Existing Overhead Transmission Line	Existing No. 37 Substation Fence Line
Existing Transformer	Proposed No. 37 Substation Fence Line Expansion
Proposed Transformer	Railway
Existing ENMAX Substation Building	Buildings
Proposed New Building	Hydrology



1:5,000
0 25 50 100 150 200 250 m

The data contained is for information purposes only. ENMAX Power Corporation does not make any representations or warranties as to the accuracy or completeness of the information contained herein or its verification. ENMAX does not guarantee that the information will not change at any time. This data is a representation of ENMAX owned and operated facilities only and may not depict the exact locations on the ground. This document is being furnished on a confidential basis and is not to be distributed to any other parties.

Data source:
Civil and Geomatics; ENMAX 2021;
Landbase: City of Calgary 2021.