

# BOW TRAIL

## Transmission Line Alteration

### PROJECT OVERVIEW

ENMAX Power Corporation (ENMAX Power) has been directed by Alberta Transportation to alter a portion of its existing transmission line 7.82L to accommodate the construction of a portion of the West Calgary Ring Road for the future Bow Trail interchange. In response, ENMAX Power is proposing to remove eight existing wood poles and replace these poles with six new structures (the Project). These structures will consist of three self-supporting steel monopoles (monopoles), two steel H-Frame structures, and one new wood pole. Some pole positions will be shifted, however all six new structures will be within the same alignment as the existing poles within the Transportation Utility Corridor, east of 101 Street SW near the location of the future Bow Trail interchange.

### TRANSMISSION STRUCTURES

The existing wood poles range in height from approximately 17 to 20 metres. The proposed new structures consist of three monopoles, two H-Frames, and one wood pole, which will range in height from approximately 17 to 35 metres.

### PROPOSED SCHEDULE

ENMAX Power plans to file an application for the Project with the Alberta Utilities Commission in Q4 2020. Subject to approvals being granted, construction is expected to start in Q2 2021, with an expected in-service date in Q3 2021.

**For more than 100 years, ENMAX and its predecessors have delivered safe and reliable electricity in Calgary.**



Existing and proposed wood poles



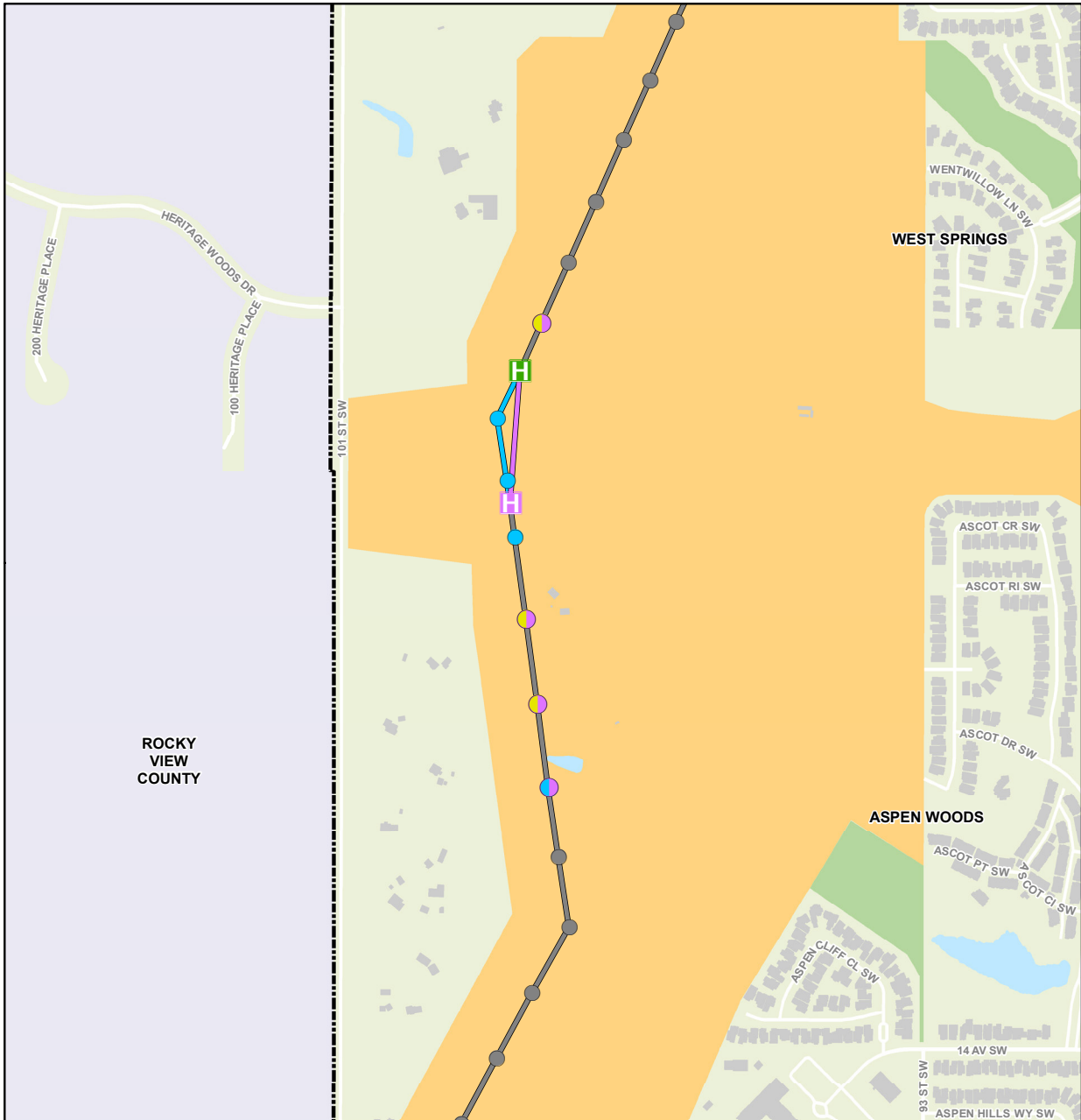
Proposed steel monopoles



Example of the proposed steel H-frame

# BOW TRAIL

## Transmission Line Alteration



**Bow Trail  
Transmission Line  
Alteration  
Newsletter Map**

**Legend**

<b>Transmission Structures</b>	<b>Transmission Routes</b>	<b>Calgary City Limit</b>
● Existing wood pole	— Existing Transmission Line	■ Buildings
■ New self-supporting H-frame structure	— Existing Transmission Line to be Removed	■ Hydrology
■ Existing wood pole to be replaced with new self-supporting H-frame structure	— Proposed Transmission Line	■ Natural Area
● Existing wood pole to be removed		■ Transportation Utility Corridor
● Existing wood pole to be replaced with new wood pole		■ Rocky View County
● Existing wood pole to be replaced with new monopole		

Scale: 1:7,500  
0 100 200 400 600 m



November 2020



The data contained is for information purposes only. ENMAX Power Corporation does not make any representations or warranties as to the accuracy or completeness of the information contained herein or its verification. ENMAX does not guarantee that the information will not change at any time. This data is a representation of ENMAX owned and operated facilities only and may not depict the exact locations on the ground. This document is being furnished on a confidential basis and is not to be distributed to any other parties.

Data sources:  
Civil and Circuity: ENMAX 2020;  
Landbase: City of Calgary, DAS, 2020.

T:\Gdrive\_ENMAX\_GISS\Enmax\_GIS\_Projects\Stakeholders\CWRR\_Bow\_Trail\_2020\1019\Work\CWRR\_Bow\_Trail\_Stakeholder\_Newsletter\_2020112.mxd



# BOW TRAIL

## Transmission Line Alteration



### COMMITMENT TO COMMUNITY

ENMAX Power is committed to being a responsible corporate neighbour. Our commitment includes providing timely and meaningful engagement with stakeholders about projects. We provide opportunities for residents, occupants and landowners to be informed about projects, and to engage with us from the planning phase through construction.

### ABOUT ENMAX CORPORATION

Headquartered in Calgary, Alberta, with operations across Alberta and Maine, ENMAX Corporation (ENMAX) is a leading provider of electricity services, products and solutions. Through its subsidiaries, ENMAX Power Corporation and Versant Power, formerly Emera Maine, ENMAX owns and operates transmission and distribution utilities in Calgary, Alberta and northern and eastern Maine, safely and reliably delivering electricity to all Calgary homes and businesses and more than 159,000 customers in Maine. Through ENMAX Energy Corporation, ENMAX owns and operates 1,509 MW of generation and offers a range of innovative electricity, natural gas, energy and engineering services to more than 674,000 residential, commercial and industrial customers across Alberta. ENMAX is a private corporation and The City of Calgary is its sole shareholder.

### CONTACT INFORMATION

Your input is valuable to us. We will ensure you get answers to your questions and your concerns are understood. For more information about the Project, please contact:

#### ENMAX POWER CORPORATION

**Phone:** 403-514-1471

**E-mail:** [stakeholderrelations@enmax.com](mailto:stakeholderrelations@enmax.com)

**Website:** [enmax.com/bowtrail](http://enmax.com/bowtrail)

---

To learn more about the regulatory process, please contact:

#### ALBERTA UTILITIES COMMISSION

**Phone:** 403-310-4282

**Email:** [info@auc.ab.ca](mailto:info@auc.ab.ca)

**Website:** [auc.ab.ca](http://auc.ab.ca)