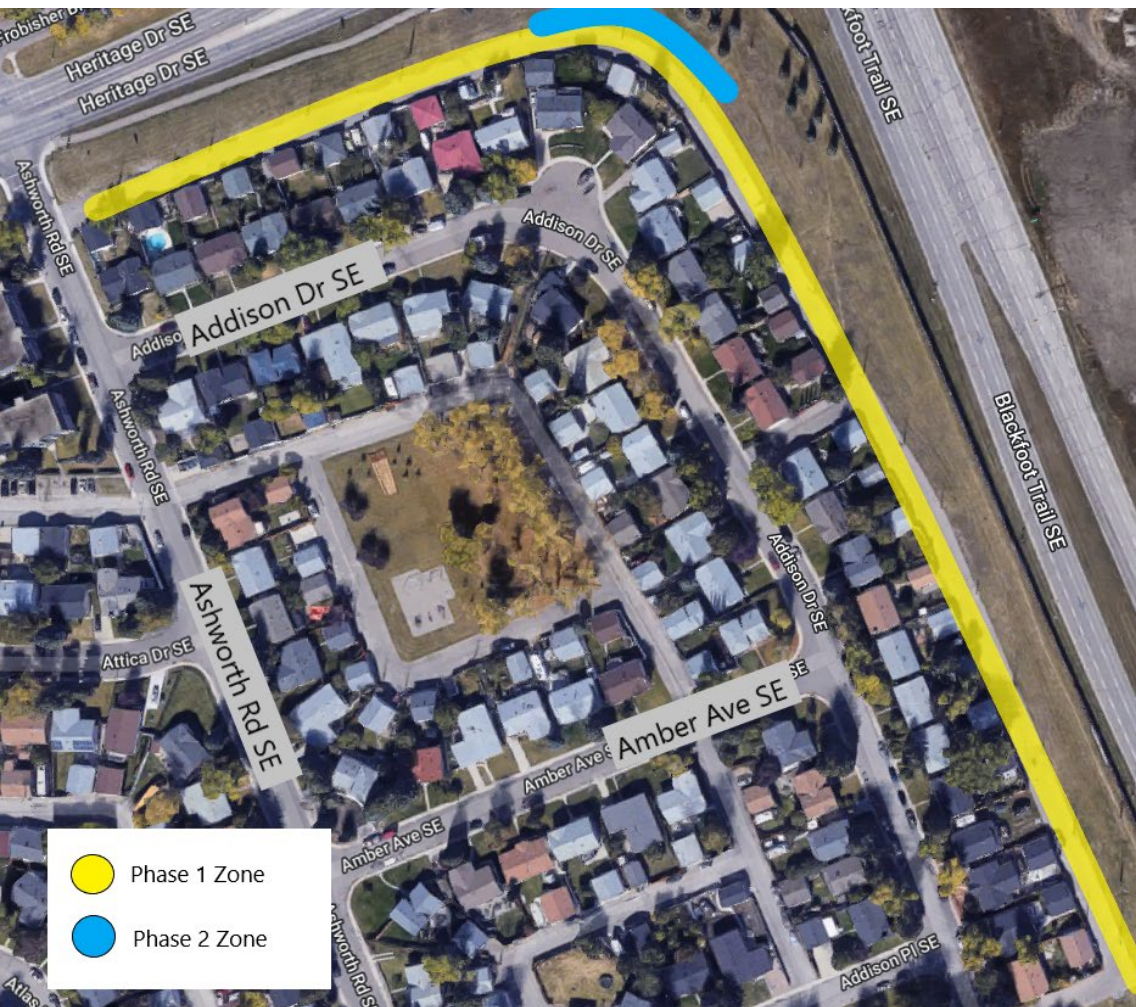


## ADDISON DRIVE SE - ALLEYWAY

### Project map:

(The work areas indicated below are an approximate and not to scale)



### Project details:

Reference: 21451240

#### Location:

City-owned alleyway behind Addison Drive SE (see map on left).

#### Dates:

Phase 1 of construction has been completed.

**Phase 2 of construction will resume on November 14, 2022.**

#### Duration:

Phase 2 of the project will take approximately 1 week.

#### Work times:

Monday - Sunday, 7 a.m. - 4 p.m.

### What's happening?

ENMAX Power is upgrading the electrical services in your area. Phase 1 of work includes replacing several kilometres of existing overhead distribution lines to support Calgary's evolving electrical needs. We will also be replacing some of the existing power poles and anchor supports located in the utility rights-of-way. **Phase 2 of this work includes burying the overhead infrastructure underground.**

If you are a Property Manager for a building affected by this work, please share this notice with your tenants.



## ADDISON DRIVE SE - ALLEYWAY

### What to expect:

We make every effort to minimize the effect our work has on daily activities, and we follow all applicable standards and bylaws. Below are the things to be aware of related to this project.

#### During construction:

- ENMAX and contractor vehicles, hydrovac trucks and associated utility equipment will be onsite.
- Construction barricades and/or safety fencing.
- Noise and/or minor vibrations during construction.

#### Power outages:

- A power outage will NOT be required for this project.

#### Road closures, detours, parking and access:

- Alleyway access may be restricted when crews are working behind your property.
- Please ensure the area surrounding utility equipment is clear of obstructions.

#### After construction:

- Areas affected by the project will be repaired once work is complete (weather permitting).
- Ongoing maintenance of repaired areas on private property is the responsibility of the homeowner/property manager.

### We're here to help.

If you have any questions about this project, please reach out to our Customer Relations Team:

**403-514-3990**

**[powercustomerrelations@enmax.com](mailto:powercustomerrelations@enmax.com)**

For your safety, as well as the safety of our crews or team members, please do not approach the work site with questions and concerns.