



CONSTRUCTION NOTICE

AUGUST - OCTOBER 2021

Ref #21176124

WHAT'S HAPPENING?

ENMAX Power is required to modify existing overhead electrical services in your area, to accommodate construction of Alberta Transportation's West Calgary Ring Road project.

Crews will be replacing 20 existing wooden poles with 21 steel monopoles for the transmission line. The new steel structures will be slightly taller, and in a new alignment. Crews will also be relocating a distribution line east of the new transmission line, to accommodate the future Stoney Trail and 17 Avenue intersection.

WHERE?

This work will take place within the Transportation and Utility Corridor (TUC) primarily west of 101 Street SW, between Lower Springbank Road and Heritage Woods Drive SW, the future Stoney Trail and 17 Avenue alignment. Crews will be working north to south (**please see map on the other side**).

WHEN?

Construction is anticipated to commence the week of **August 16, 2021** and will continue for approximately two months. Crews will be working Monday to Friday from 7 a.m. until 7 p.m. Weekend work may be required.

WHAT CAN I EXPECT DURING CONSTRUCTION?

VISUAL

Please expect the following on-site:

- ENMAX and contractor personnel and vehicles, hydrovac and bucket trucks, auger rigs, cranes, and associated utility equipment
- Construction barricades, safety fencing, and road signage (if required)

Restoration of ground conditions will take place following this work, as required.

TRAFFIC ACCOMMODATIONS

Please expect the following:

- Increased ENMAX and contractor vehicle traffic in area
- Limited roadway access along 101 Street SW when crews working near the roadway; follow on-site signage and/or flaggers

POWER SUPPLY

A power outage is NOT currently required to facilitate this work.

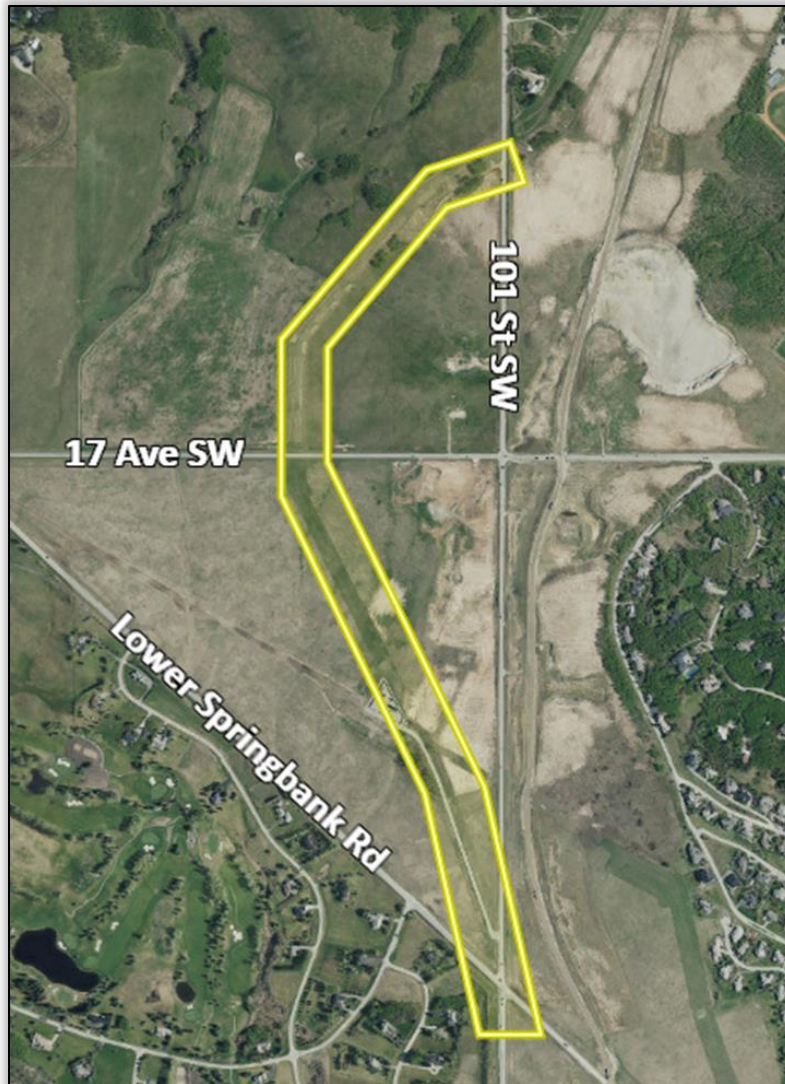
NOISE

There may be an increase in noise and/or minor vibrations during construction activities. Please be advised we comply with the City of Calgary's Community Standards Noise Bylaw. In the event we are required to temporarily exceed these levels, necessary permits are obtained from the City.

TREE TRIMMING

Trees growing too close to overhead lines will be trimmed to maintain safe minimum clearances from power lines, as set out in the Alberta Electrical Utility Code.

MAP *(The work area indicated below is approximate only and not to scale)*



OUR COMMITMENT

ENMAX is committed to being a responsible corporate neighbour in the communities we serve. This commitment includes responding to public concerns and inquiries to allow for meaningful project dialogue. This allows us to deliver value-driven service in a responsible and accountable manner. We appreciate your cooperation while we continue to provide reliable power to all Calgarians.

QUESTIONS?

If you have any questions about this work, please contact our Power Customer Relations team at 403-514-3990 or email powercustomerrelations@enmax.com.

**Please note that ENMAX makes every effort to work within the schedule, as indicated above. At times, unforeseen circumstances may prevent us from carrying out the work as planned. We kindly ask for your understanding if additional time is required.*