

Project Overview

Alberta Transportation has started planning for the construction of the SW portion of the road that will complete the Calgary Ring Road. The completion of the Calgary Ring Road requires the relocation of several utilities that are directly impacted by the road construction.

In the preliminary phase of the road design, ENMAX No. 30 Substation located at 11111 – 37 Street SW on Tsuu T'ina land, was identified as being situated on the alignment of the Ring Road. Alberta Transportation has requested ENMAX to relocate the substation, its transmission lines and distribution feeders away from the road alignment.

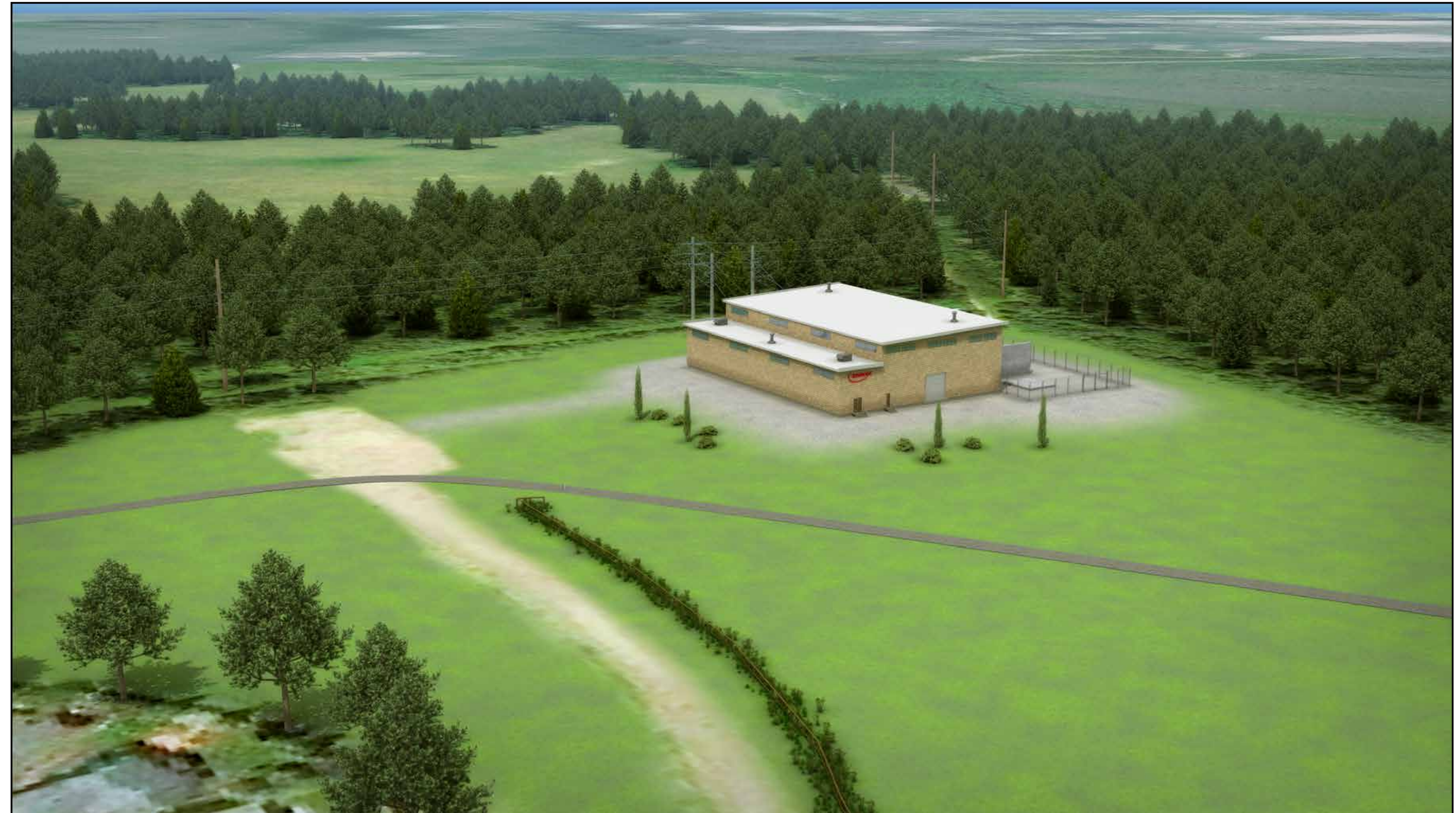


Substation

For service continuity purposes, ENMAX is proposing to build a new substation (No. 35) at the end of 90 Avenue SW in the southwest corner of Glenmore Park while the existing one is still in service. The new substation will have the same capacity as the existing one and consist of:

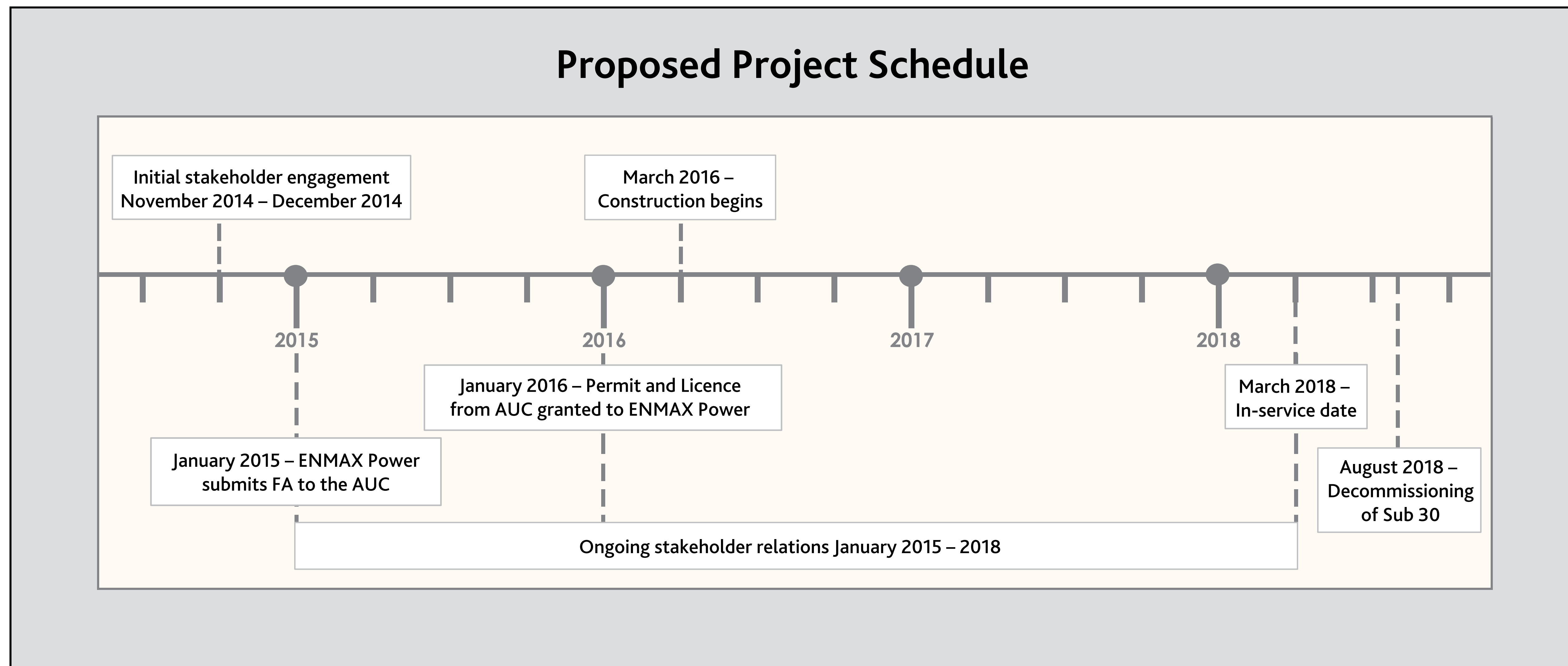
- high and medium voltage switchgear
- protection systems all contained within the building
- provisions to accommodate four transformers, but will be equipped with two 30 MVA 138 / 13.8 kV transformers at this stage to feed the existing demand.

Once construction of No. 35 Substation is complete, No. 30 Substation will be removed.



Project Schedule

ENMAX Power plans to file the Facility Application (FA) with the AUC in late January 2015. Subject to approvals being granted, ENMAX Power expects construction to begin in March 2016 with a proposed in-service date of March 2018.



Transmission

Electricity from power generating facilities moves to local areas via high voltage power lines across Alberta. These transmission lines enter a substation where a transformer reduces voltage to a level that can be safely delivered to customers.

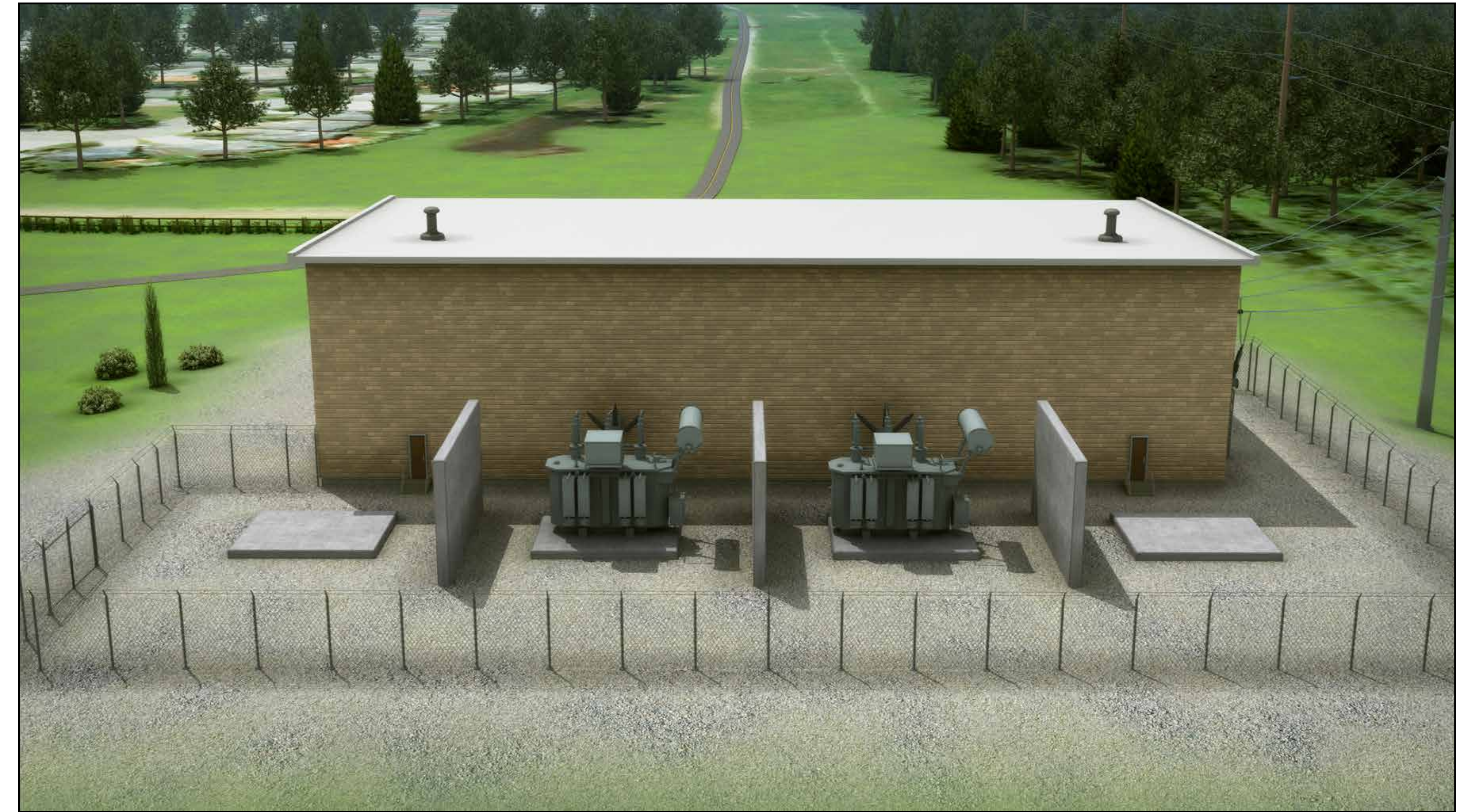
Three steel monopoles will be added to the existing transmission line to feed the new substation.



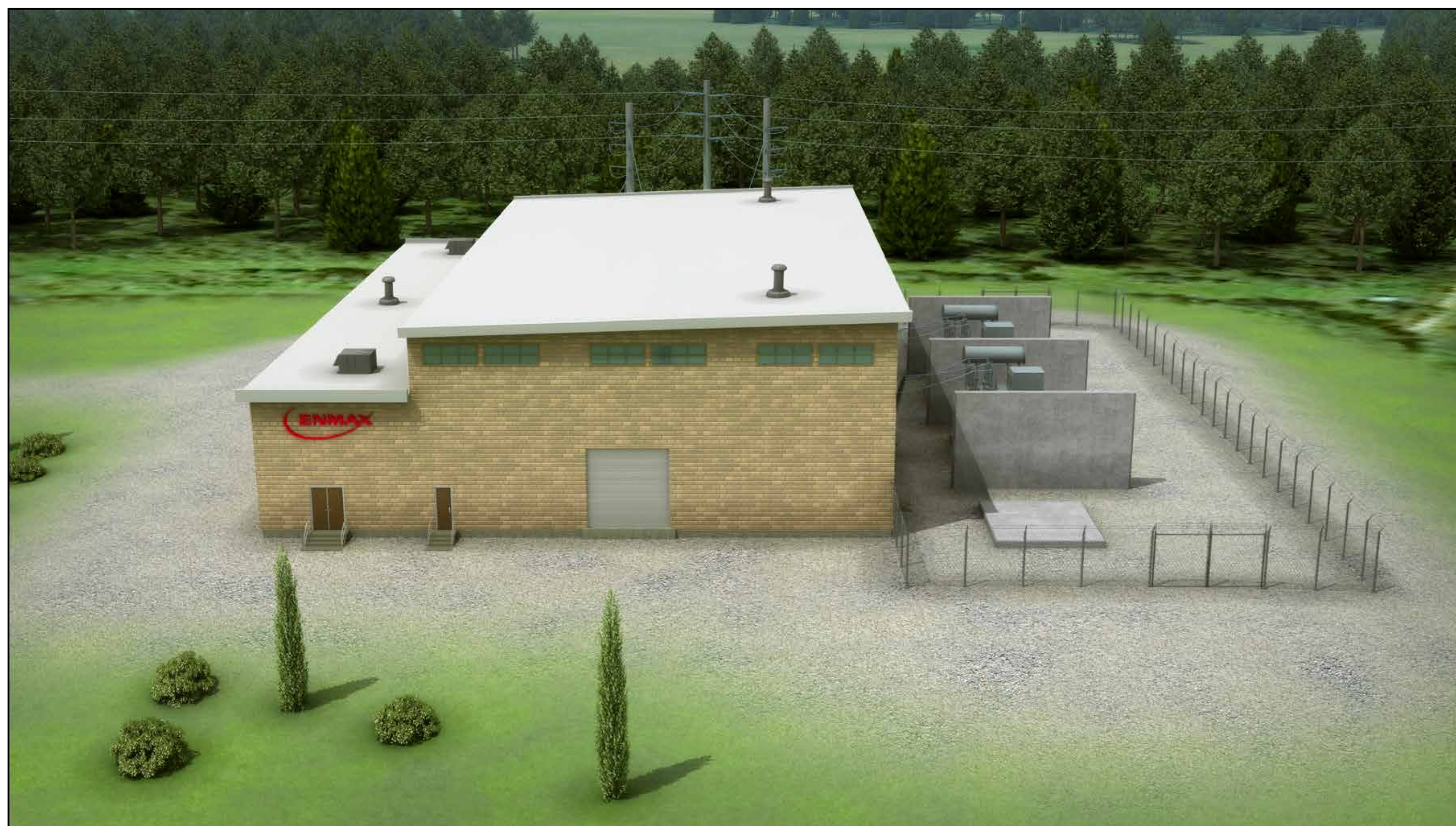
Substation Renderings



NORTH



SOUTH



WEST



EAST