

SARCEE TRAIL AND RICHMOND ROAD SW

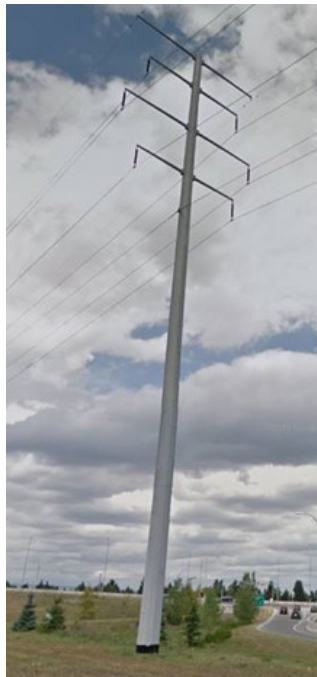
Transmission Structure Alteration

PROJECT OVERVIEW

The City of Calgary Transportation Infrastructure Department has requested that ENMAX Power Corporation (ENMAX) alter its existing 1.80L and 21.80L transmission lines to accommodate the widening of Sarcee Trail, north of Richmond Road SW (the Project). The existing lines are located within the east utility corridor of Sarcee Trail. ENMAX proposes to replace two existing steel lattice structures with two double circuit 138 kV self-supporting steel monopoles (steel monopoles) and move them further northeast, along Sarcee Trail, out of the route of the widened Sarcee Trail.



EXISTING TRANSMISSION STRUCTURE



PROPOSED STEEL MONOPOLE

PROPOSED SCHEDULE

ENMAX plans to file an application for the Project with the Alberta Utilities Commission in Q1 2020. Subject to approvals being granted, construction is expected to take place in Q3 2020 with an expected in-service date also in Q3 2020.

TRANSMISSION STRUCTURES

The existing transmission structures are steel lattice structures that range from approximately 32 to 35 metres in height. The new proposed structures will be steel monopoles that will be approximately 35 metres in height.

SARCEE TRAIL AND RICHMOND ROAD SW

Transmission Structure Alteration



COMMITMENT TO COMMUNITY

ENMAX is committed to being a responsible corporate neighbour. Our commitment includes providing timely and meaningful engagement with stakeholders about projects.

We provide opportunities for area residents, occupants and landowners to be informed about projects, and to engage with ENMAX from the planning phase through construction.

ABOUT ENMAX CORPORATION

ENMAX Corporation, through its subsidiaries, makes, moves and sells electricity to residential, small business and large commercial customers and is headquartered in Calgary, Alberta, with offices in Edmonton. ENMAX Power Corporation owns and operates transmission and distribution infrastructure in Calgary and ENMAX Energy Corporation owns diverse electricity generation facilities throughout the province. Through its subsidiaries, ENMAX offers a range of innovative energy solutions to over 667,700 customers across Alberta including electricity, natural gas, renewable energy and other services.

CONTACT INFORMATION

Your input is valuable to us. We will ensure you get answers to your questions and your concerns are understood. For more information about the proposed project, please contact:

ENMAX POWER CORPORATION

Phone: 403-514-1471

E-mail: stakeholderrelations@enmax.com

Website: enmax.com/SarceeRichmond

To learn more about the regulatory process, please contact:

ALBERTA UTILITIES COMMISSION

Phone: 403-310-4282

Email: info@auc.ab.ca

Website: auc.ab.ca