

# 162 AVENUE AND 37 STREET SW

## Transmission Line Relocation

### PROJECT OVERVIEW

A developer has requested that ENMAX Power Corporation (ENMAX) alter and relocate portions of existing transmission line 138-6.80L, and to relocate portions of its transmission line 138-6.82L to accommodate a housing development (the Project). Both transmission lines will remain single circuit 138 kV transmission lines.

### EXISTING TRANSMISSION LINE 138-6.80L

The 24 existing wood transmission poles (wood poles) will remain in place to support the existing under-built distribution line; however, they will be reduced in height. The existing wood poles currently range from approximately 20 metres to 24 metres in height. As a result of the Project, these poles will be reduced to approximately 11 to 13 metres in height.

### PROPOSED TRANSMISSION LINE 138-6.80L

ENMAX is proposing to relocate a portion of transmission line 138-6.80L by installing 23 self-supporting steel monopole structures (monopoles) approximately 200 metres east into the Transportation Utility Corridor. The monopoles will remain on the west side of Stoney Trail SW and will range from approximately 20 metres to 24 metres in height. In addition, ENMAX will utilize five existing poles on transmission line 138-6.82L to facilitate the interconnection of transmission line 138-6.80L with its No. 6 Substation.

### PROPOSED TRANSMISSION LINE 138-6.82L

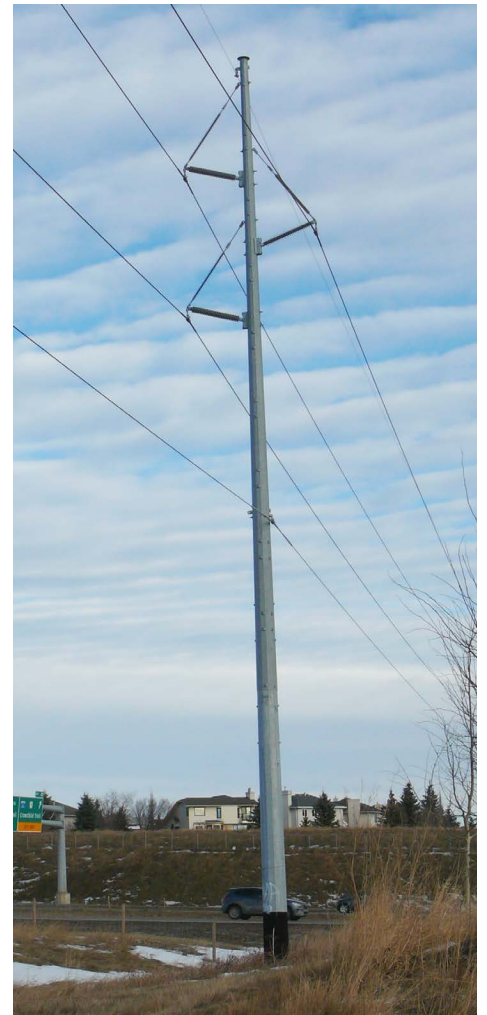
ENMAX will install five new monopoles to facilitate the interconnection of transmission line 138-6.82L with ENMAX's No. 6 Substation, which will range from approximately 20 metres to 23 metres in height.

### PROPOSED SCHEDULE

ENMAX plans to file an application for the Project with the Alberta Utilities Commission in Q1 2020. Subject to approvals being granted, construction is expected to start in Q3 2020 with an expected in-service date in Q4 2020.



EXISTING WOOD POLE



PROPOSED MONOPOLE

# 162 AVENUE AND 37 STREET SW

## Transmission Line Relocation



### COMMITMENT TO COMMUNITY

ENMAX is committed to being a responsible corporate neighbour. Our commitment includes providing timely and meaningful engagement with stakeholders about projects. We provide opportunities for residents, occupants and landowners to be informed about projects, and to engage with us from the planning phase through construction.

### ABOUT ENMAX CORPORATION

ENMAX Corporation, through its subsidiaries, makes, moves and sells electricity to residential, small business and large commercial customers and is headquartered in Calgary, Alberta, with offices in Edmonton. ENMAX Power Corporation owns and operates transmission and distribution infrastructure in Calgary and ENMAX Energy Corporation owns diverse electricity generation facilities throughout the province. Through its subsidiaries, ENMAX offers a range of innovative energy solutions to over 667,700 customers across Alberta including electricity, natural gas, renewable energy and other services.

### CONTACT INFORMATION

Your input is valuable to us. We will ensure you get answers to your questions and your concerns are understood. For more information about the proposed project, please contact:

#### ENMAX POWER CORPORATION

Phone: 403-514-1471

E-mail: [stakeholderrelations@enmax.com](mailto:stakeholderrelations@enmax.com)

Website: [enmax.com/162Avenue](http://enmax.com/162Avenue)

---

To learn more about the regulatory process, please contact:

#### ALBERTA UTILITIES COMMISSION

Phone: 403-310-4282

Email: [info@auc.ab.ca](mailto:info@auc.ab.ca)

Website: [auc.ab.ca](http://auc.ab.ca)

# 162 AVENUE AND 37 STREET SW Transmission Line Relocation

